

YOUR CO-OP



# 2024 Annual Report



**YOUR CO-OP**  
*Delivering Value  
That Matters*



## Our Mission

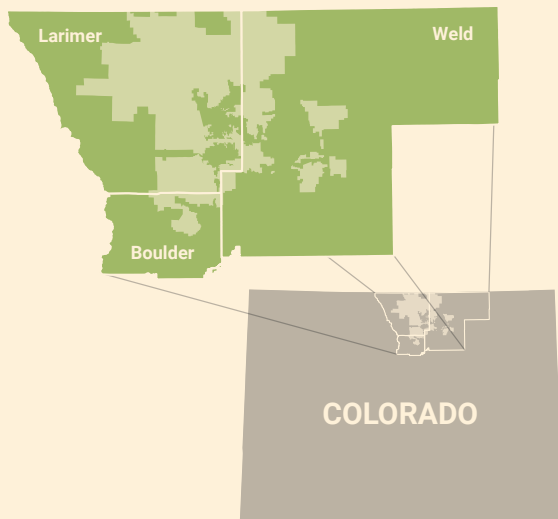
We are committed to providing safe, reliable, efficient energy solutions with exceptional service to our members.

## Who We Serve

We cover 2,000 square miles of service territory in Larimer, Weld, and Boulder counties with over 4,000 miles of overhead, underground, and transmission power lines.

We are your local member-owned, not-for-profit electric cooperative who is committed to providing safe, reliable, affordable, and locally sourced energy to more than 57,000 homes and businesses in Northern Colorado.

## Where We Serve



## How We Serve

### 7 Cooperative Principles

1. **Voluntary & Open Membership**
2. **Democratic Member Control**
3. **Members' Economic Participation**
4. **Autonomy & Independence**
5. **Education, Training & Information**
6. **Cooperation Among Cooperatives**
7. **Concern for Community**

## Board of Directors

**Chair:** Peter Hyland, Weld County

**Vice Chair:** Bryan Ehrlich, Larimer County

**Secretary:** Thaine Michie, Larimer County

**Director:** Steven Anderson, Larimer County

**Director:** Sheryl Dryer Henderson, Larimer County

**Director:** Rick Johnson, Larimer County

**Director:** Jan Peterson, Larimer County

**Director:** Jack Schneider, Weld County

**Director:** Ron Sutherland, Boulder County

## Proudly Ranked #1 for Lowest Rate in Colorado

Our members saved over \$300 in 2024 compared to the state average!

### Delivering Value that Matters

Poudre Valley REA members depend on us for safe, reliable, affordable energy solutions with exceptional service.

Our mission is to do just that – while continuously improving to meet and exceed your evolving needs.

#### Value of Membership

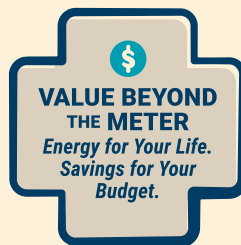
PVREA provides the lowest residential rate and is among the highest reliability in Colorado.

#### Value Beyond the Meter

We promise energy for your life, savings for your budget, and services to empower our community.

#### Value of the Co-op Business Model

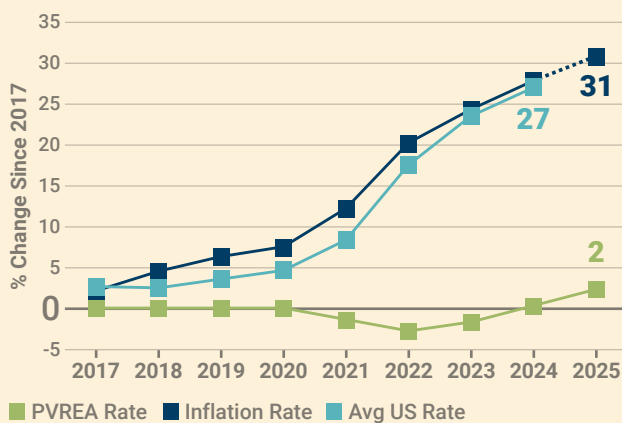
There's value in being part of an electric cooperative instead of a municipality or investor-owned utility.



### PVREA Rates, Lasting Value

Between 2017 and 2025, the price you pay for electricity has only increased by about 2%.

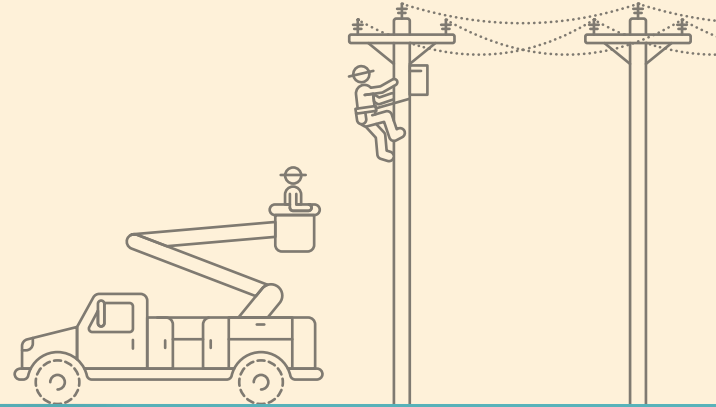
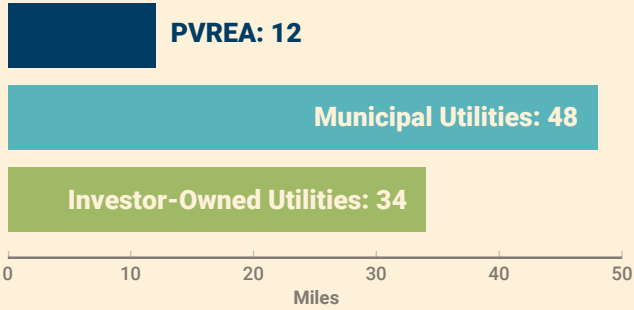
That level of stability is rare, especially over eight years.



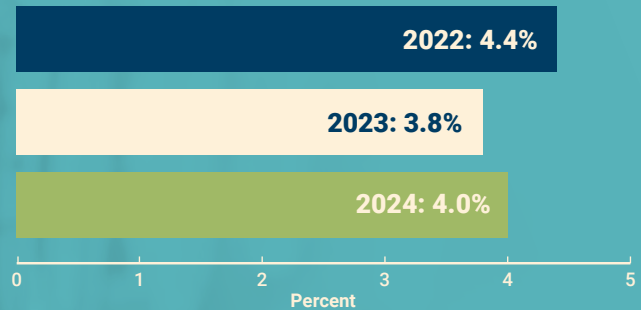
*Inflation Rate:* Bureau of Labor Statistics  
*Avg US Electric Rate:* US Energy Information Administration, 2024 data estimated, 2025 data unavailable  
*2025 Inflation Rate:* estimated

Lowest  
Rate  
in the  
State

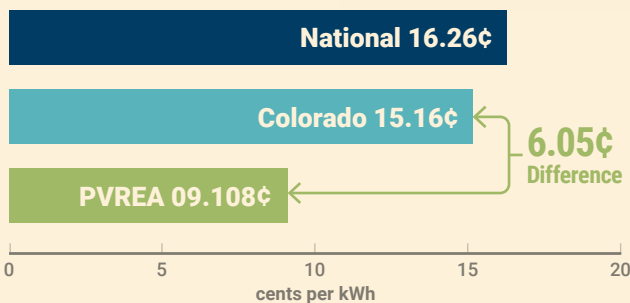
## Meters Served per Mile of Line



## Meter Growth Year-Over-Year



## Average Price per kWh: Residential



PVREA MEMBERS SAVED OVER \$300 ANNUALLY COMPARED TO THE STATE AVERAGE!



## Reliability

**74.22**

PVREA Outage Duration in Minutes (2024)

**123.9**

National Outage Duration in Minutes (2023)

**102.38**

PVREA Outage Restoration Time in Minutes (2024)

**118.5**

National Outage Restoration Time in Minutes (2023)



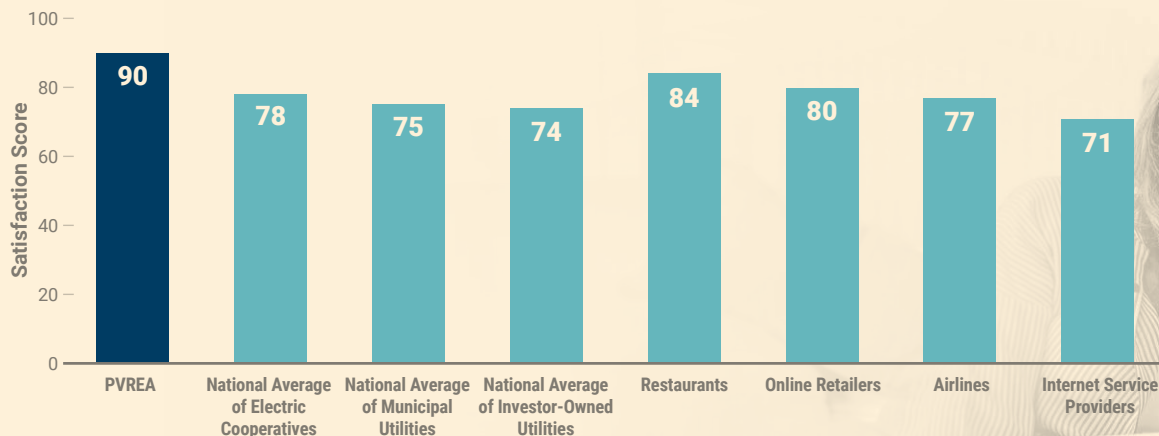
PVREA IS RANKED NATIONALLY IN THE TOP QUARTILE FOR RELIABILITY!

# Safety Is Our Cornerstone

## Safety First, Safety Always



## Service



Compared to publicly measured energy utilities in the ACSI® survey of customers rating their own utility. Results based on data provided by PVREA, collected in 2024. ACSI did not regulate the survey administration or sample size. ACSI and its logo are registered trademarks of the American Customer Satisfaction Index, LLC. For more about the ACSI, visit [www.theacsi.org](http://www.theacsi.org).

## Electrical Safety Demonstrations

**27**

Demonstrations Given in 2024

LEARN HOW TO RESERVE A FREE SAFETY DEMONSTRATION AT [WWW.PVREA.COOP](http://WWW.PVREA.COOP)



## Community Support Given

**\$240,726**

Total Donations in 2024

**1,104**

Employee Volunteer Hours in 2024



## Community Events

**30+**

Events

**COOPCARES**

## PVREA Employee Ambassadors

**26**

PVREA Employee Ambassadors

**13**

Events

**260+**

Hours Worked

**1,200+**

Member Interactions



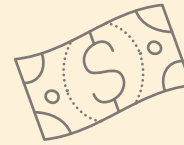
## Electrification & Energy Efficiency Rebates

**Over \$1.4 Million**

Total Rebates Given in 2024

**1,500+**

Total Rebates Given in 2024



REVIEW ALL THE AVAILABLE REBATES AT [WWW.PVREA.COOP/REBATES](http://WWW.PVREA.COOP/REBATES)

## Member Credits



**\$2 Million**  
**Returned to Members**

2024 Member Credits

**Tens of Millions**  
**since 1939**

Total Returned to Members



LEARN MORE ABOUT MEMBER CREDITS AT [WWW.PVREA.COOP/MEMBER-CREDITS](http://WWW.PVREA.COOP/MEMBER-CREDITS)

## Scholarships Awarded

**29**

Scholarships Available Each Year

**\$53,000**

Available Each Year

**Over \$500K**

Total Assistance Given



LEARN MORE ABOUT EDUCATIONAL SCHOLARSHIPS AT [WWW.PVREA.COOP/SCHOLARSHIPS](http://WWW.PVREA.COOP/SCHOLARSHIPS)

## Educational Grant Funding



**\$25,000**

Empower Grants  
Awarded in 2024

**Over \$95,000**

Total STEAM  
Funding Given

**53**

Total Projects  
Supported



LEARN MORE ABOUT EMPOWER GRANTS AT [WWW.PVREA.COOP/EMPOWER-GRANTS](http://WWW.PVREA.COOP/EMPOWER-GRANTS)

## Community Solar

**400**

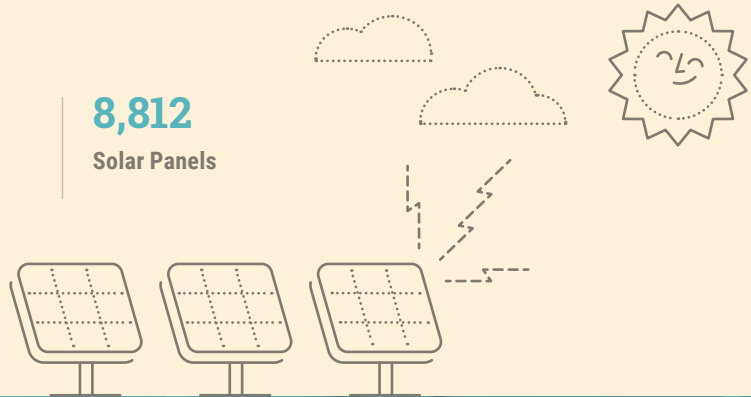
Homes Powered  
Annually

**2.1**

Megawatts (MW)  
Generated

**8,812**

Solar Panels



## Paperless Billing

**24,000**

Members Enrolled

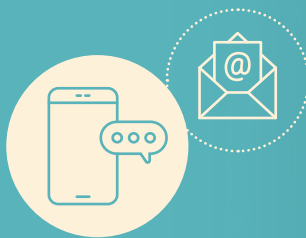
**44%**

Membership Enrolled

**\$323,424**  
each year

Total Amount Saved

LEARN HOW TO ENROLL IN PAPERLESS BILLING AT [WWW.PVREA.COOP](http://WWW.PVREA.COOP)



## Grassroot Advocacy Outreach

**1,210**

Total Advocates

LET YOUR VOICE BE HEARD AND  
ENROLL IN COOPERATIVE VOICES AT  
[WWW.PVREA.COOP/COOPERATIVE-VOICES](http://WWW.PVREA.COOP/COOPERATIVE-VOICES)





## Co-op Connections

**24**

Local Co-op  
Connections Deals

**Thousands of Dollars through  
Local & National Partners**

Total Amount of Savings



SIGN UP YOUR BUSINESS OR SEARCH FOR SAVINGS AT  
[WWW.PVREA.COOP/CO-OP-CONNECTIONS](http://WWW.PVREA.COOP/CO-OP-CONNECTIONS)



## Electric Cooperative Youth Tour

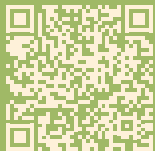
**1 PVREA**

Student

**1,800+**

Students From Around  
the Country

LEARN MORE ABOUT THIS FREE TRIP  
TO OUR NATION'S CAPITAL.



## Cooperative Youth Leadership Camp

**2**

PVREA Students

**70+**

Kids from CO, WY, KS & OK

LEARN ABOUT THIS CAMP FOR  
JUNIORS AND SENIORS.



## Faces, Places & Voices of Poudre Valley REA

Welcome to Faces, Places & Voices of Poudre Valley REA, a recurring feature that brings you closer to the heart of your cooperative community.

In this series, we'll introduce you to the incredible members who make up PVREA, share the stories of the unique places we call home, and highlight the voices of those shaping our region.

Whether you're a lifelong member or a recent addition to NoCo, these stories are your chance to get to know the people and places that make our co-op and community special.

So, please take a moment each month to connect with your fellow members, learn about the communities we serve, and discover the faces that make Poudre Valley REA a place to call home.

### Who could be the next Faces, Places & Voices?

Do you have a story to tell? Or do you know a PVREA member we should highlight?

Let us know by filling out this survey! It could be our next spotlight story featured on Faces, Places & Voices of Poudre Valley REA.

[WWW.PVREA.COOP/CONTACT-US](http://WWW.PVREA.COOP/CONTACT-US)



**MIKE KROELLS**

PVREA Construction and Maintenance Supervisor  
Recognizing Active-Duty Military & Veterans



**CYNTHIA KINTZLEY**

District Coordinator, Weld County Toys for Tots  
Marine Corps Veteran, Captain, Logistics Officer



**CHARLOTTE MILLS**

Fossil Ridge High School  
2024 Washington DC Youth Tour Sponsored Student  
Capital Connections, Learning the History of the US

## The Numbers

### System Stats

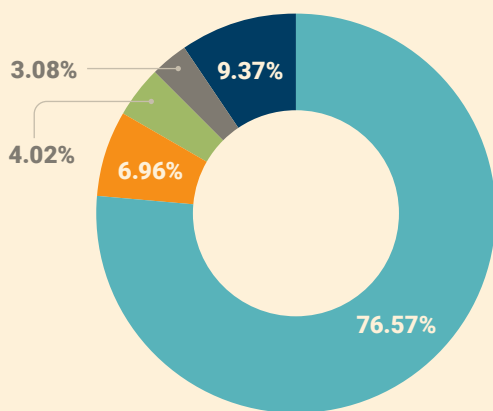
	2024	2023
Total Services in Place	56,930	54,759
Miles of Line	4,638	4,557
Total kWh Purchased	1,586,526,643	1,476,792,383
System Peak Demand	289,282	277,919
Month of High Peak	August	August
Purchase Power Cost	\$117,175,908	\$108,063,209
Power Cost/kWh	\$0.074	\$0.073
Property Tax	\$1,496,963	\$1,583,276

### Balance Sheet

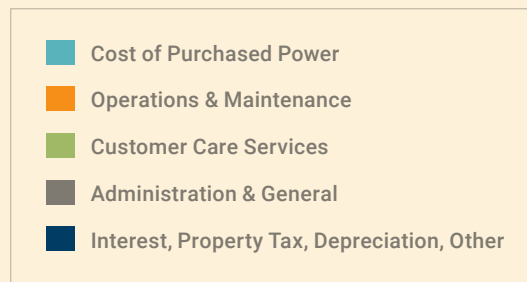
	2024	2023
<b>Assets</b>		
Total Utility Plant	\$296,208,080	\$281,246,561
Less: Accumulated Depreciation	80,103,528	76,529,305
Net Utility Plant	216,104,552	204,717,256
Other Property & Investments	99,629,609	92,709,039
Current / Other Assets	22,063,763	21,738,373
<b>Total Assets</b>	<b>\$337,797,924</b>	<b>\$319,164,668</b>
<b>Liabilities &amp; Capital</b>		
Patronage Capital & Equity	\$145,456,238	\$137,427,515
Long-Term Liabilities	118,372,538	120,337,031
Current / Other Liabilities	73,969,148	61,400,122
<b>Total Liabilities &amp; Capital</b>	<b>\$337,797,924</b>	<b>\$319,164,668</b>

### Statement of Operations

	2024	2023
<b>Operating Revenue</b>		
Residential	\$64,007,867	\$60,461,785
Irrigation	2,342,202	1,659,589
Small Commercial	7,539,698	7,171,717
Large Commercial	80,024,060	72,296,227
Public Buildings & Lighting	639,434	592,579
<b>Total Operating Revenue</b>	<b>\$154,553,261</b>	<b>\$142,181,897</b>
<b>Operating Expenses</b>		
Cost of Purchased Power	\$117,175,908	\$108,063,209
Operations & Maintenance	10,646,261	8,585,151
Customer Care Services	6,152,623	5,725,173
Administration & General	4,714,178	5,068,374
<b>Total Operating Expenses</b>	<b>\$138,688,970</b>	<b>\$127,441,907</b>
Depreciation & Amortization	8,435,709	8,301,781
Property Tax	1,496,963	1,583,276
Interest	4,138,492	3,801,268
Other Deductions	271,775	268,086
<b>Total Cost of Electric Service</b>	<b>\$153,031,909</b>	<b>\$141,396,318</b>
<b>Total Operating Margins</b>	<b>\$1,521,352</b>	<b>\$785,579</b>
Non-Operating Interest Income	275,775	280,383
Non-Operating Margins - Other	1,626,293	1,507,618
G&T Capital Credits	6,954,169	864,287
<b>Net Margin or Patronage Capital</b>	<b>\$10,377,589</b>	<b>\$3,437,867</b>



2024 numbers are unaudited at the time of print  
2023 numbers are fully audited





Your Touchstone Energy® Cooperative

**CONTACT**

7649 REA Parkway, Fort Collins, CO 80528

1.800.432.1012 | [pvrea@pvrea.coop](mailto:pvrea@pvrea.coop)

[WWW.PVREA.COOP](http://WWW.PVREA.COOP)

**MEMBER  
VALUE**